

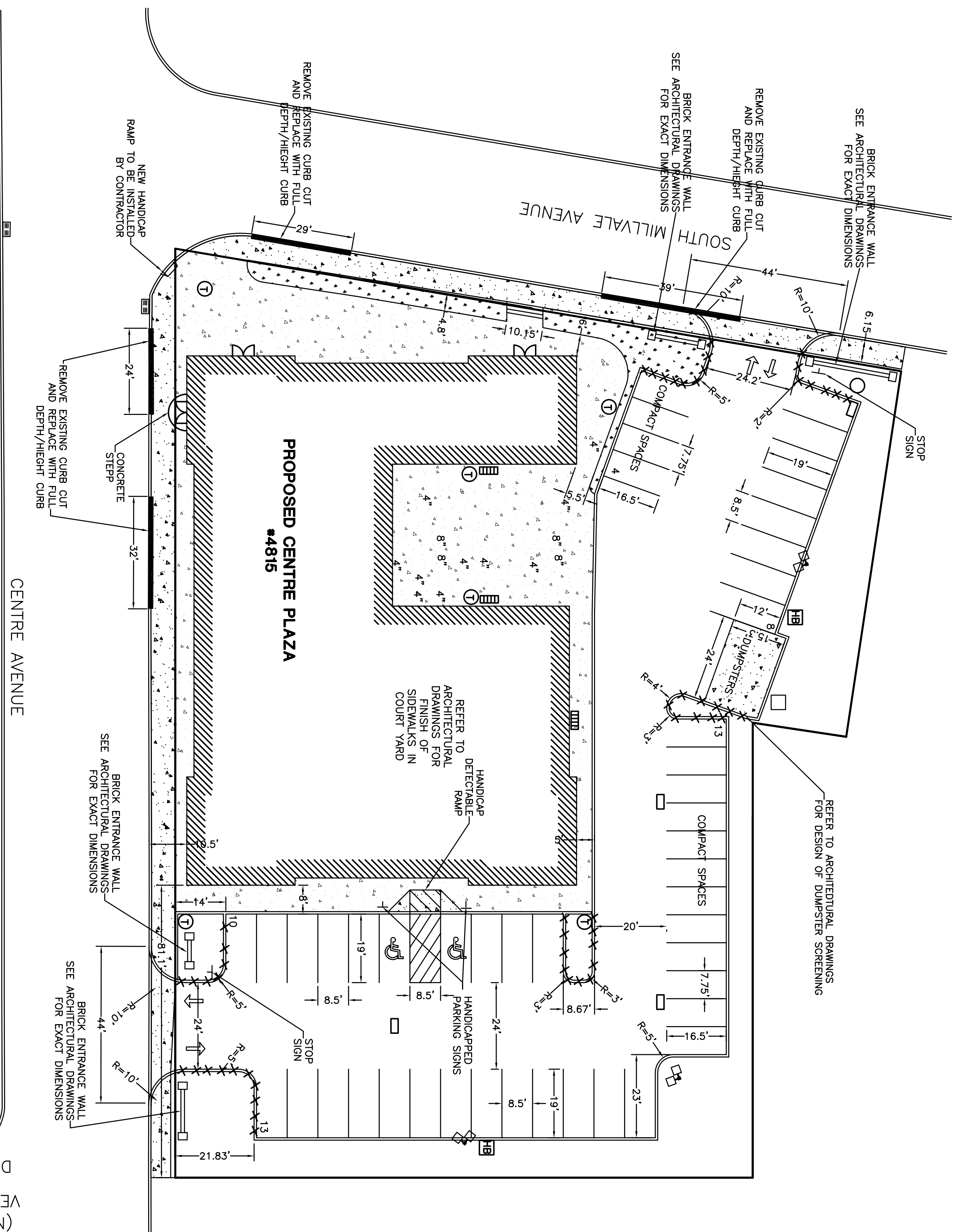
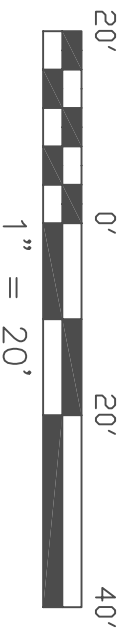
**GENERAL NOTES:**

1. THE GENERAL CONTRACTOR SHALL NOTIFY ALL UTILITY COMPANIES INVOLVED IN THE SITE NO MORE THAN TEN DAYS AND NO LESS THAN THREE DAYS IN ADVANCE OF EXCAVATION (PA ACT 287 OF 1974 AMENDED BY ACT 197 OF 1989).
2. TRAFFIC SHALL BE MAINTAINED ON ALL ADJOINING STREETS AND DRIVES AT ALL TIMES. TRAFFIC CONTROL SHALL BE MAINTAINED IN ACCORDANCE WITH THE PENNSYLVANIA DEPARTMENT OF TRANSPORTATION'S REQUIREMENTS.
3. CONTRACTOR SHALL USE CONCRETE CURBS, UNLESS NOTED.
4. CONTRACTOR SHALL VERIFY THE LOCATION AND INVERT ELEVATION OF ALL EXISTING UTILITIES WITH PROPOSED CONNECTIONS PRIOR TO CONSTRUCTION AND GRADING OF THE SITE.
5. CONTRACTOR SHALL PLACE 6 INCHES OF TOPSOIL ON ALL DISTURBED AREAS NOT SCHEDULED FOR PAVING, THEN SEED AND MULCH ACCORDING TO THE SEEDING SCHEDULE.
6. THE CONTRACTOR SHALL INSTALL ALL PAVEMENT MARKINGS ACCORDING TO THE CITY OF PITTSBURGH, ADA REGULATIONS AND ANY OTHER GOVERNING BODY.
7. ALL CURB NOT SHOWN AS FULL DEPTH CURB SHALL BE EXTRUDED CONCRETE CURB, UNLESS NOTED.

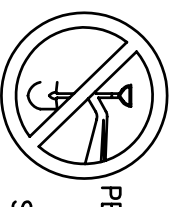
**LEGEND**

- E.O.P. = EDGE OF PAVEMENT  
T/C = TOP OF COVER  
INV. = INVERT  
CMP = CORRUGATED METAL PIPE  
VCP = VITRIFIED CLAY PIPE  
CPP = CORRUGATED PLASTIC PIPE  
W.L.K. = WATERLINE PAINT MARK  
W.V. = WATER VALVE  
F.H. = FIRE HYDRANT  
G.V. = GAS VALVE  
T.C.B. = TRAFFIC CONTROL BOX  
T.P. = TELEPHONE POLE  
S. = STORM SEWER  
SS. = SANITARY SEWER  
G. = GAS LINE  
W. = WATERLINE  
O.E. = OVERHEAD ELECTRIC  
U.T. = UNDERGROUND TELEPHONE  
U.E. = UNDERGROUND ELECTRIC

- BIKE RACK  
TRASH RECEPTICAL  
HOSE BIB  
FULL DEPTH CURB  
HEAVY DUTY PAVED AREA

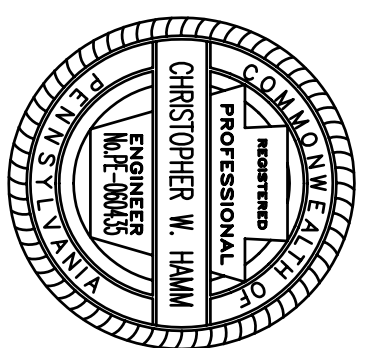


(NO CONSTRUCTION VEHICLES PERMITTED)  
DEVONSHIRE STREET

 PENNSYLVANIA ONE CALL SYSTEM, INC.  
Call Before You Dig  
1-800-242-1776  
SERIAL NO. 2306994 AND 2306995  
In the Region You Live, Dig Safe

EXISTING UTILITIES SHOWN WERE TAKEN FROM RECORDS PROVIDED BY UTILITY COMPANIES. FIELD LOCATION OF UTILITIES BY THE CONTRACTOR IS STILL REQUIRED. THE CONTRACTOR SHALL EXERCISE CARE TO AVOID INJURY TO ALL UTILITY FACILITIES.

Morris Knowles & Associates, Inc.  
expressly reserves its common law copyright and other rights in these plans. These plans are not to be reproduced, changed or manipulated in any form or manner whatsoever, nor are they to be assigned to any third party without permission and consent of Morris Knowles & Associates, Inc.



**CENTRE PLAZA**  
prepared for  
WALNUT CAPITAL PARTNERS-CENTRE/MILLVALE, L.P.  
situated  
CENTRE AVENUE, CITY OF PITTSBURGH, ALLEGHENY COUNTY  
**DIMENSION PLAN**

**MKA** Morris Knowles & Associates, Inc.  
Consulting Engineers and Land Surveyors  
443 Athena Drive  
Delmont, PA 15626  
Telephone: (724) 468-4622  
Fax: (724) 468-8940

DESIGNED BY: C.W.H.  
REVIEWED BY: N.G.C.  
DRAWN BY: C.W.H.  
DATE: 1-25-04  
PROJ. NO.: 1392.03  
DRAWING NO.: C-22794

REVISION BY: CWH	DATE: 2-24-05	DESCRIPTION: PER PROJECT MEETING
REVISION BY: CWH	DATE: 4-8-05	DESCRIPTION: BUILDING SIZE
REVISION BY: CWH	DATE: 5-17-05	DESCRIPTION: COORDINATION OF DRAWINGS
REVISION BY: _____	DATE: _____	DESCRIPTION: _____
REVISION BY: _____	DATE: _____	DESCRIPTION: _____
REVISION BY: _____	DATE: _____	DESCRIPTION: _____