

OAK TREE PLACE SHOPPING CENTER

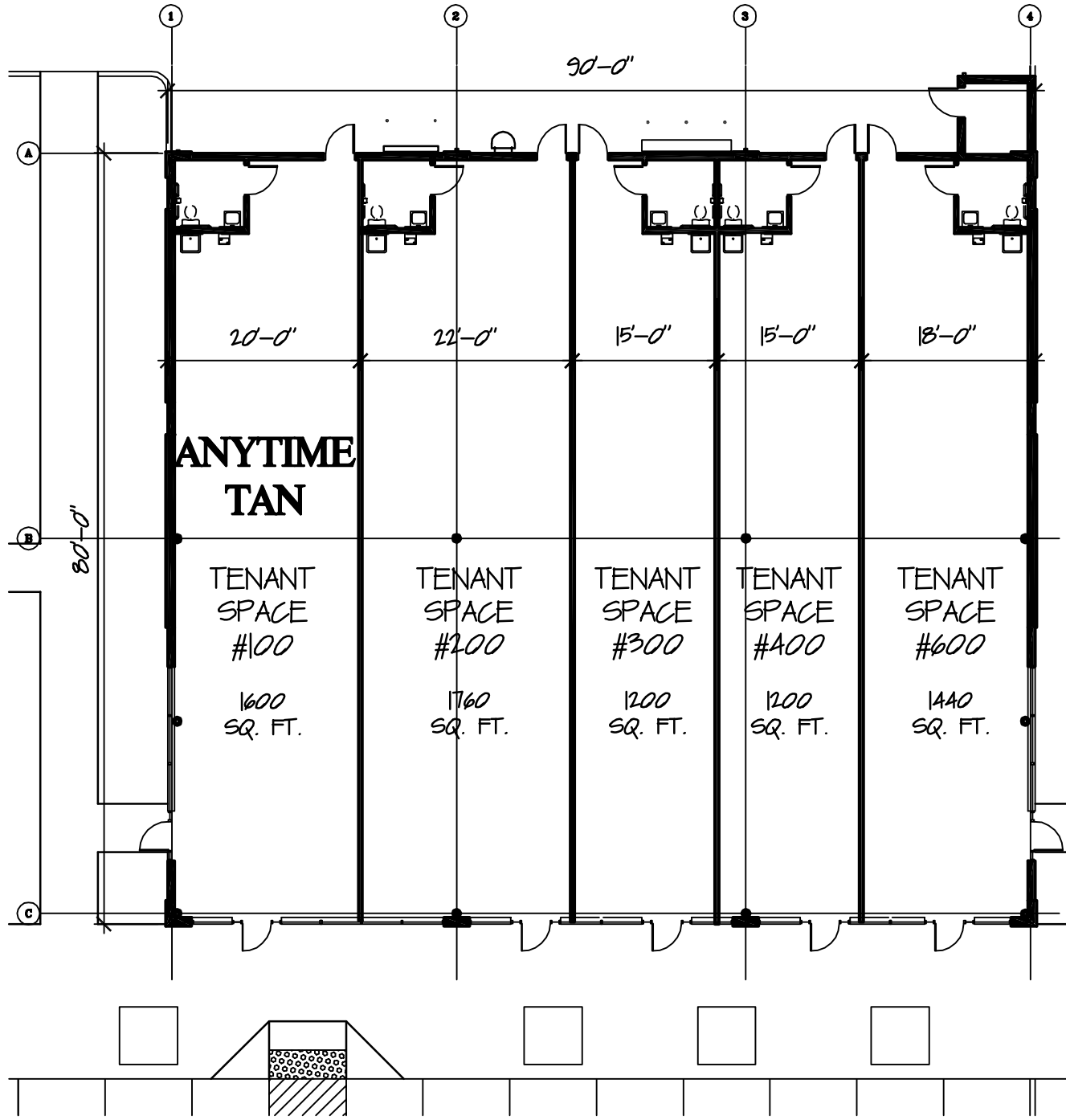
BUILDING #1

20,024 ROUTE 19, GRANBERRY, PA 16066

2,560 SQ. FT. BUILDING

DATE: 7/7/2009

SOURCE ARCHITECHNOLOGY SYSTEMS INC. SASI
 64 East Craffton Avenue Pittsburgh, PA 15205 412-921-5487



BLDG #2 LEASE PLAN "F" LI

1/16" = 1'-0"

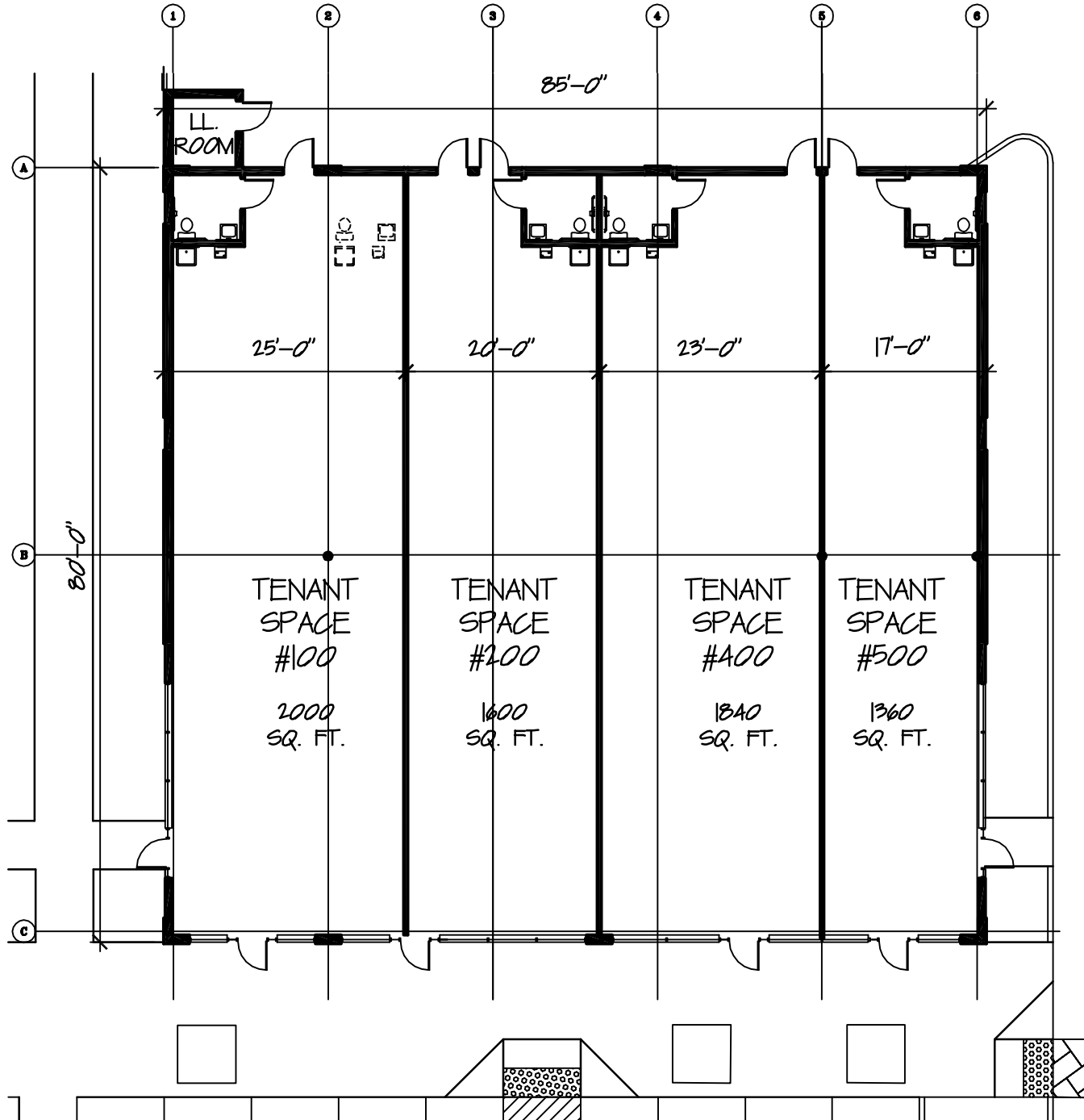
OAK TREE PLACE SHOPPING CENTER

BUILDING #2
 20018 ROUTE 19, CRANBERRY, PA 16066
 7,200 SQ. FT. STRIP CENTER

DATE: 7/10/2009

SOURCE ARCHITECTURE SYSTEMS INC. SASI

64 East Crafton Avenue Pittsburgh, PA 15205 412-921-5487



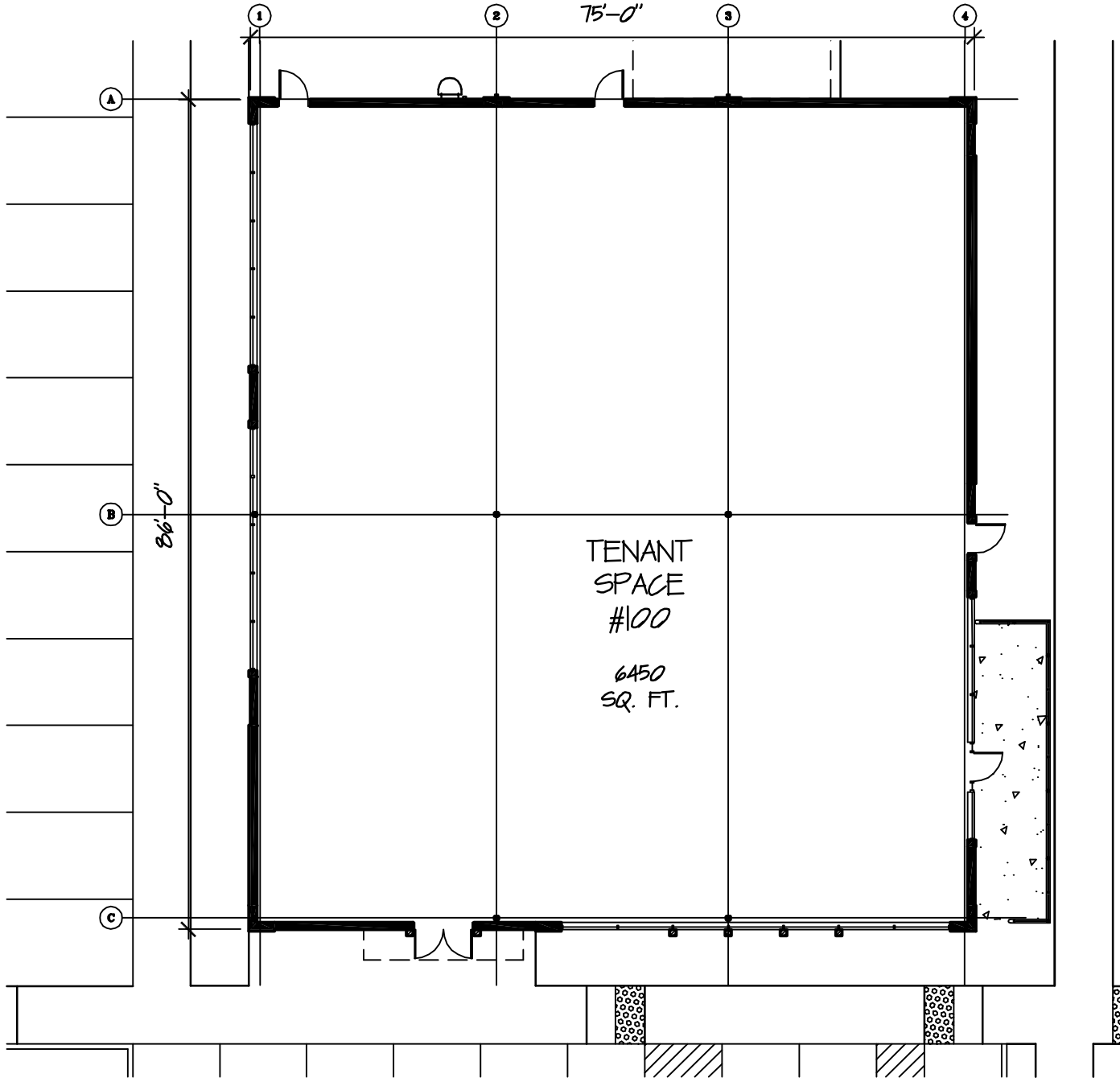
BLDG #3 LEASE PLAN "F"
 1/16" = 1'-0" 1
LL

OAK TREE PLACE SHOPPING CENTER

BUILDING #3
 2002 ROUTE 19, CRANBERRY, PA 16066
 6800 SQ. FT. STRIP CENTER

DATE: 7/10/2009

SOURCE ARCHITECTURE SYSTEMS INC. SASI
 64 East Crafton Avenue Pittsburgh, PA 15205 412-921-5487



BLDG #4 LEASE PLAN "F" 111

1/16" = 1'-0"


OAK TREE PLACE SHOPPING CENTER

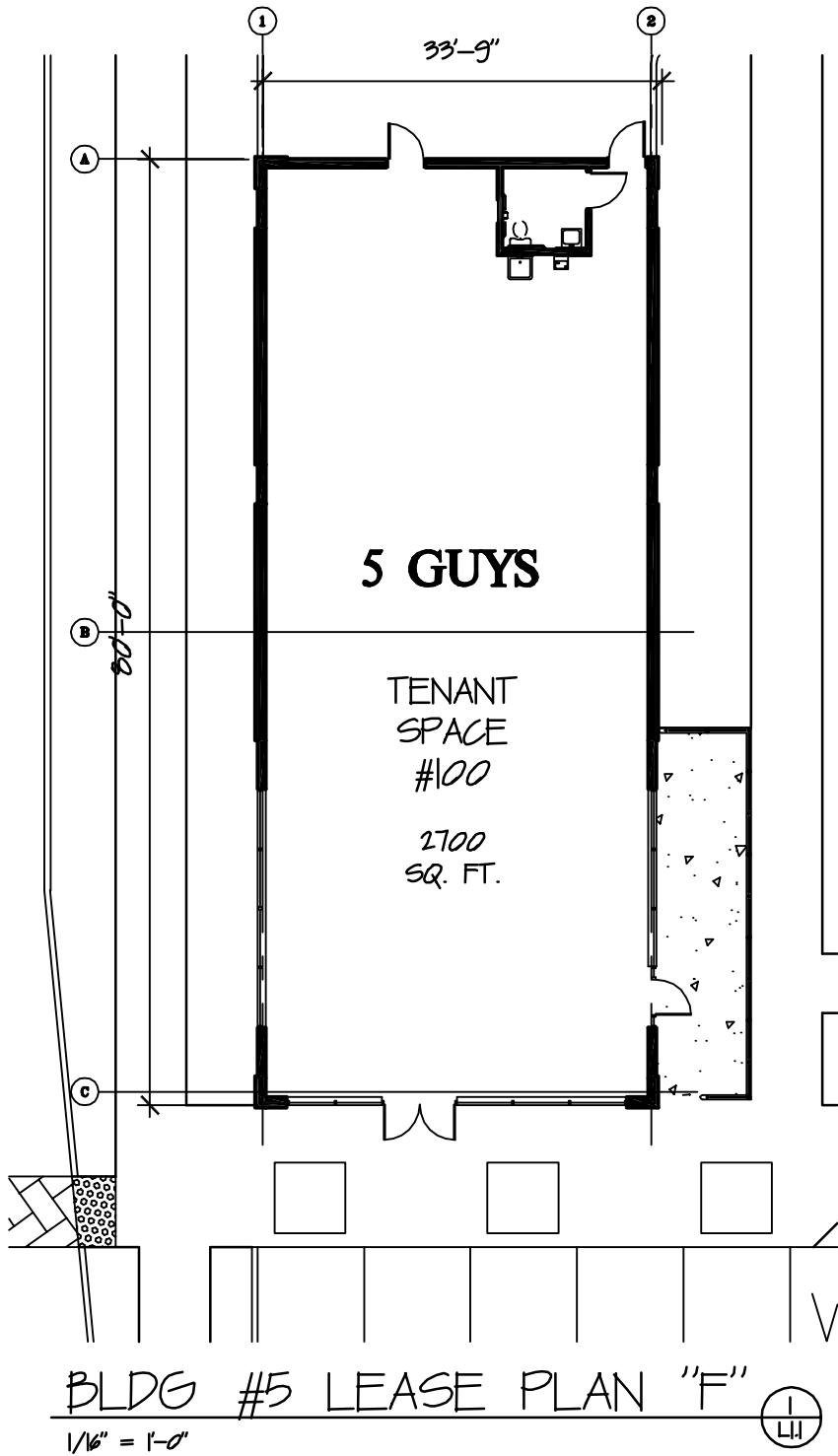
BUILDING #4

20,006 ROUTE 19, GRANBERRY, PA 16066

6,450 SQ. FT. BUILDING

DATE: 7/7/2009


S OURCE A RCHITECTHNOLOGY S YSTEMS I NC. S ASI
64 East Crafton Avenue Pittsburgh, PA 15205 412-921-5487



BLDG #5 LEASE PLAN "F"

1/16" = 1'-0"



OAK TREE PLACE SHOPPING CENTER

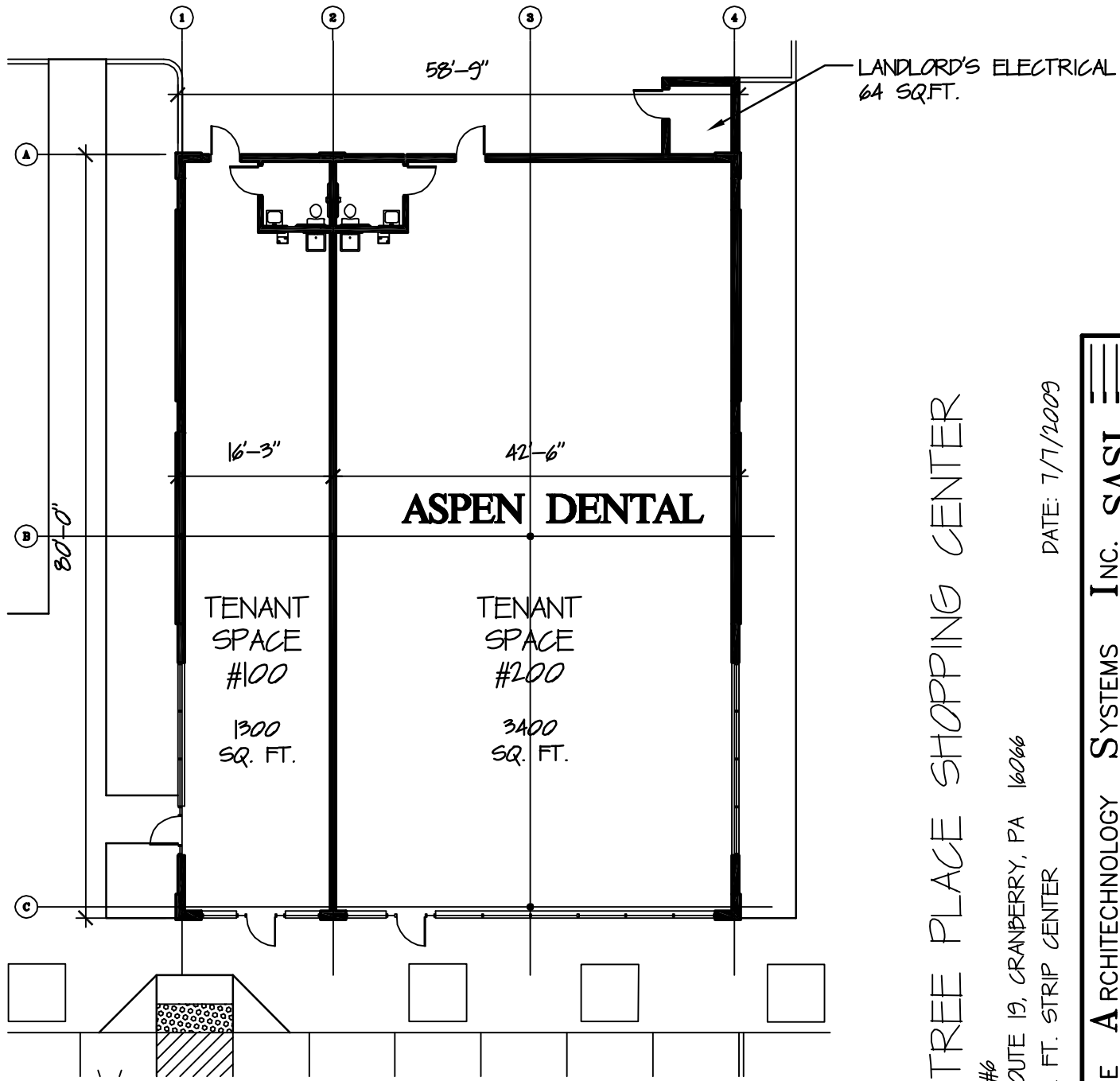
BUILDING #5

20,002 ROUTE 19, GRANBERRY, PA 16066

2,700 SQ. FT. BUILDING

DATE: 7/7/2009

SOURCE ARCHITECHNOLOGY SYSTEMS INC. SASI
 64 East Crafton Avenue Pittsburgh, PA 15205 412-921-5487



BLDG #6 LEASE PLAN "F"
 1/16" = 1'-0" (1/4)

OAK TREE PLACE SHOPPING CENTER

BUILDING #6
 20,000 ROUTE 19, CRANBERRY, PA 16066
 4,700 SQ. FT. STRIP CENTER

DATE: 7/7/2009

SOURCE ARCHITECTURE SYSTEMS INC. SASI 64 East Crafton Avenue Pittsburgh, PA 15205 412-921-5487